

Session Name: 7-27-2017 7-26 PM_Backup

Date Created: 7/27/2017 5:31:53 PM

Active Participants: 57 of 57

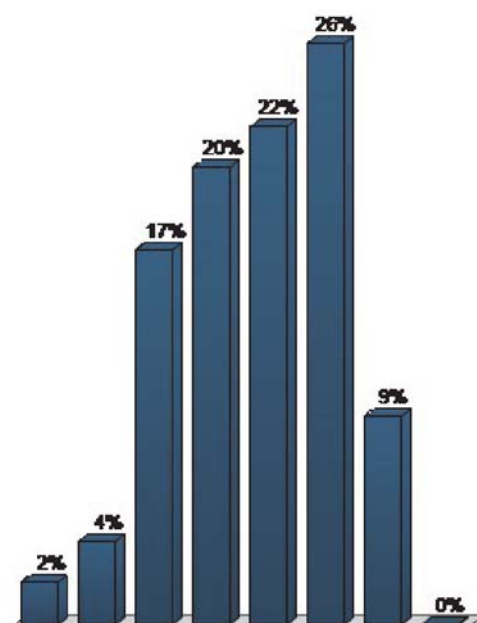
Average Score: 0.00%

Questions: 21

Results by Question

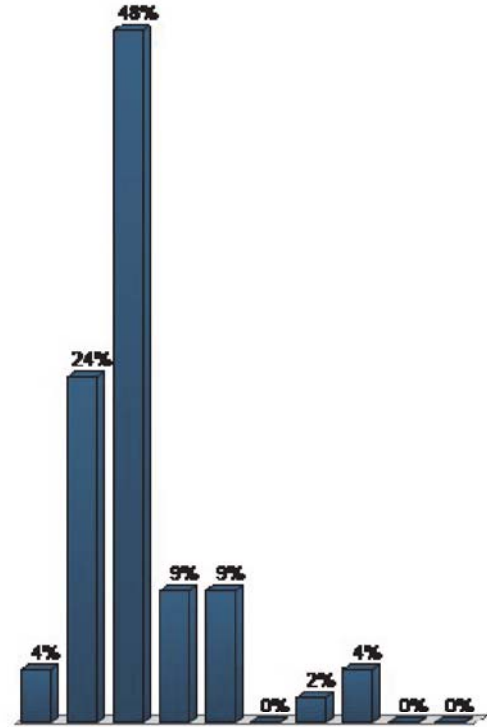
1. 1. How old are you? (choose 1): (Multiple Choice)

Responses		
	Percent	Count
10-20	1.85%	1
20 -30	3.7%	2
30-40	16.67%	9
40-50	20.37%	11
50-60	22.22%	12
60-70	25.93%	14
70-80	9.26%	5
Over 80 and awesome	0%	0
Totals	100%	54



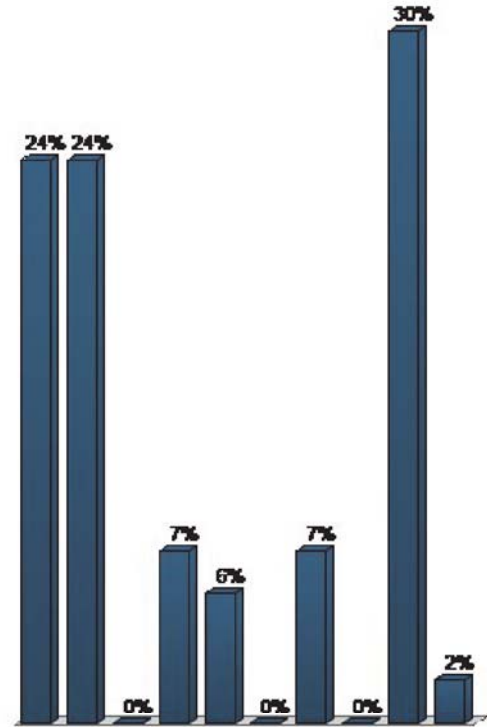
2. 2. Where do you live (choose 1): (Multiple Choice)

	Responses	
	Percent	Count
Downtown Bristol, Tennessee	3.7%	2
In one of Bristol, Tennessee's historic neighborhoods	24.07%	13
Inside the city limits of Bristol, Tennessee	48.15%	26
Outside the city limits, in Sullivan County	9.26%	5
Bristol, Virginia	9.26%	5
Johnson City	0%	0
Kingsport	1.85%	1
Blountville / Bluff City	3.7%	2
Abingdon / Washington County	0%	0
Somewhere else – use note cards	0%	0
Totals	100%	54



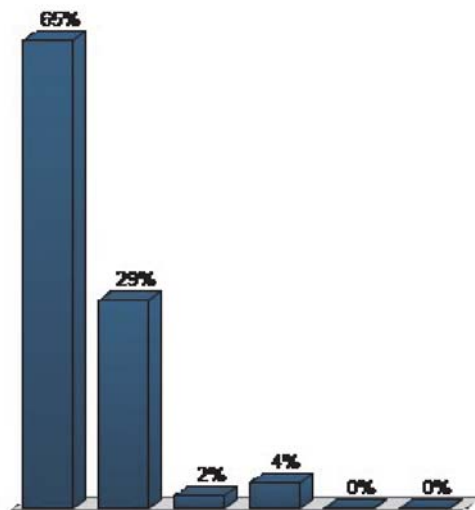
3.3. Where do you work (choose all that apply): (Multiple Choice - Multiple Response)

	Responses	
	Percent	Count
Downtown Bristol	24.07%	13
Inside the city limits of Bristol, Tennessee	24.07%	13
Outside the city limits, in Sullivan County	0%	0
Bristol, Virginia	7.41%	4
Johnson City	5.56%	3
Kingsport	0%	0
Blountville / Bluff City	7.41%	4
Abingdon / Washington County	0%	0
I'm not employed and/or retired	29.63%	16
Somewhere else – please use note cards	1.85%	1
Totals	100%	54



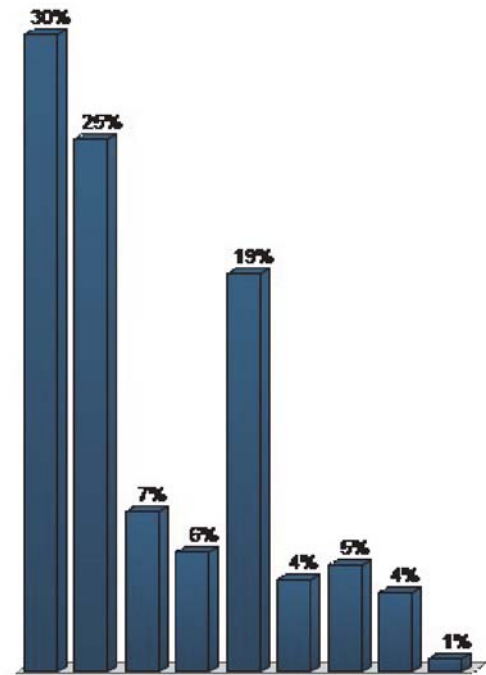
4. 4. How important is it for the City to have a Comprehensive Plan? (choose 1): (Multiple Choice)

	Responses	
	Percent	Count
It's very important to have a Comprehensive Plan	65.45%	36
A Comprehensive Plan is somewhat important to me	29.09%	16
I am not sure	1.82%	1
I don't know, I need more information	3.64%	2
A Comprehensive Plan isn't important to me	0%	0
Other – please use note card	0%	0
Totals	100%	55



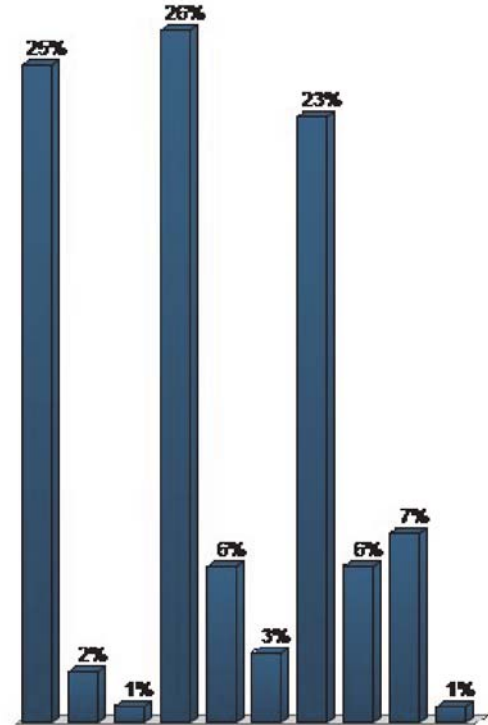
5. 5. Things I like about Bristol’s physical qualities (choose top 3): (Multiple Choice - Multiple Response)

	Responses	
	Percent	Count
Downtown character	29.81%	48
Natural outdoors environment	24.84%	40
Surrounding rural character	7.45%	12
Historic neighborhoods	5.59%	9
Arts, music and Culture	18.63%	30
The building architecture	4.35%	7
Places to shop like the Pinnacle	4.97%	8
Bristol Motor Speedway	3.73%	6
Other – please use note cards	0.62%	1
Totals	100%	161



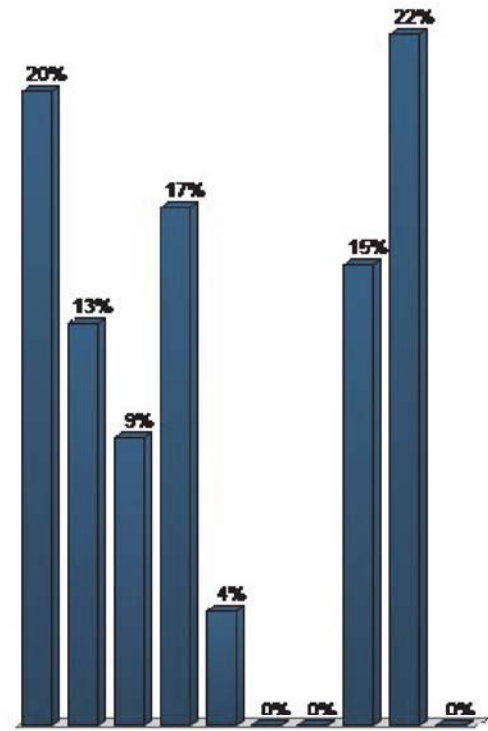
6. 6. The items I feel most satisfied with related to Bristol’s quality of life are (choose 3): (Multiple Choice - Multiple Response)

	Responses	
	Percent	Count
Sense of community and belonging	25.17%	38
Job opportunities	1.99%	3
Connectivity - transportation	0.66%	1
Relationship to outdoors	26.49%	40
A strong stable economy	5.96%	9
Demographic diversity	2.65%	4
Feeling of safety and security	23.18%	35
An active and accessible government	5.96%	9
Educational opportunities	7.28%	11
Other – fill out a comment card!	0.66%	1
Totals	100%	151



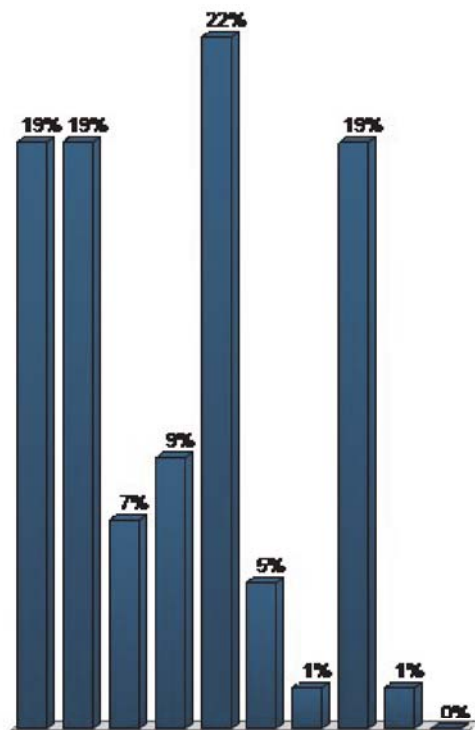
7. 7. Bristol’s image is best exemplified by (choose 1): (Multiple Choice)

	Responses	
	Percent	Count
Bristol Motor Speedway	20.37%	11
Country music	12.96%	7
Access to nature and outdoors	9.26%	5
Vibrant Downtown	16.67%	9
Quality neighborhoods	3.7%	2
Beautiful architecture	0%	0
Health and wellness	0%	0
Arts, music and culture	14.81%	8
Community pride and friendliness	22.22%	12
Other – please use note cards	0%	0
Totals	100%	54



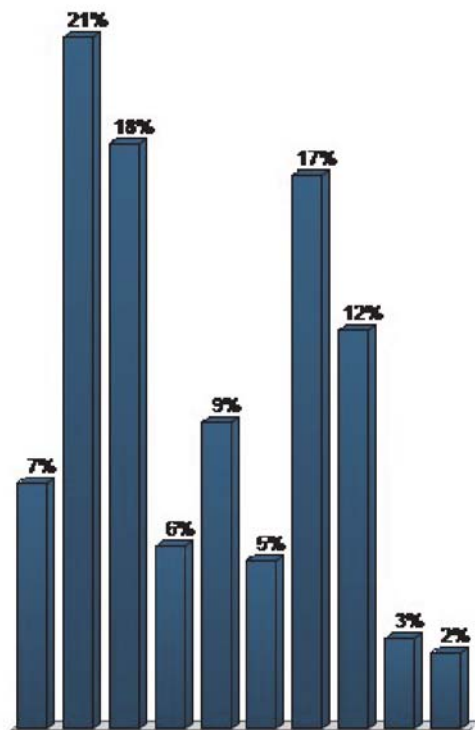
8. 8. The items I feel most satisfied with related to Bristol’s cultural identity are (choose 3): (Multiple Choice - Multiple Response)

Responses		
	Percent	Count
Sense of community and belonging	18.54%	28
Natural beauty and outdoors	18.54%	28
Faith and religion	6.62%	10
Country music history	8.61%	13
A good place to raise families	21.85%	33
Community pride	4.64%	7
Motor sports	1.32%	2
Arts, festivals, crafts, music and entertainment	18.54%	28
Clubs, organizations, associations	1.32%	2
Other – fill out a comment card!	0%	0
Totals	100%	151



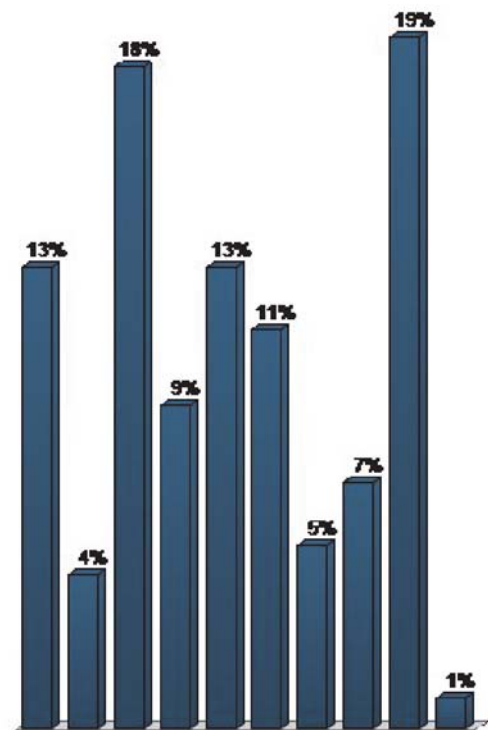
9. 9. For me, the least positive things about Bristol’s quality of life are (choose top 5): (Multiple Choice - Multiple Response)

	Responses	
	Percent	Count
Housing affordability and /or choices	7.44%	16
Employment opportunities	20.93%	45
Aging school facilities	17.67%	38
Access to health care	5.58%	12
Sprawling development	9.3%	20
Lack of entertainment and food choices	5.12%	11
Limited transportation options	16.74%	36
Access to job training	12.09%	26
I don’t have a park near my neighborhood	2.79%	6
Other – please use note card	2.33%	5
Totals	100%	215



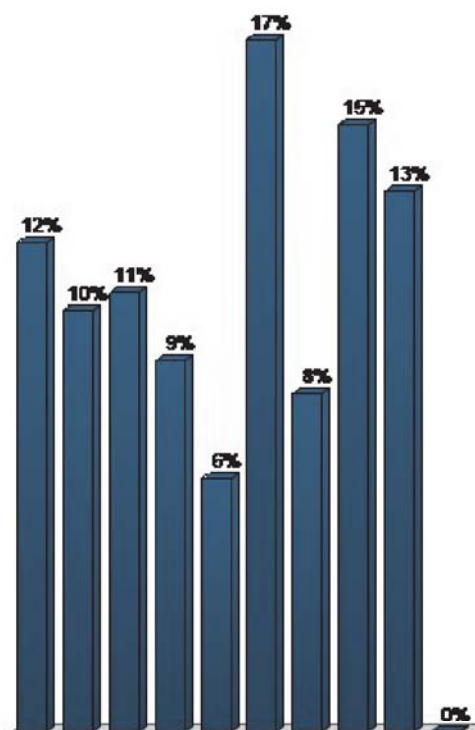
10. 10. The most important “themes” to focus on in the Comprehensive Plan are (choose top 5): (Multiple Choice - Multiple Response)

	Responses	
	Percent	Count
Creating a more walkable built environment	12.77%	30
More access and harmony with nature	4.26%	10
Economic growth and job creation	18.3%	43
Creating equity and fairness for all citizens	8.94%	21
Elevating community health and wellness	12.77%	30
Improving citywide transportation options	11.06%	26
Creating regional transportation options	5.11%	12
Creating or improving regional partnerships	6.81%	16
Keeping and attracting younger folks	19.15%	45
Other – please use note cards	0.85%	2
Totals	100%	235



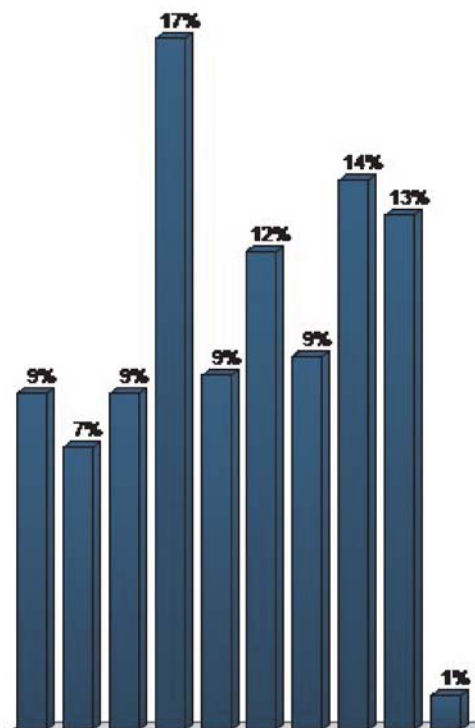
11. 11. The most important “topics” to focus on in the Comprehensive Plan are (choose top 5): (Multiple Choice - Multiple Response)

	Responses	
	Percent	Count
Improving transportation options	11.79%	29
Quality and quantity of parks and open space	10.16%	25
Housing choices and affordability	10.57%	26
Regional connectivity and cooperation	8.94%	22
Expansion and quality of City services	6.1%	15
Economic development	16.67%	41
Design and aesthetics	8.13%	20
Neighborhood revitalization	14.63%	36
Environmental responsibility	13.01%	32
Other – please use note card	0%	0
Totals	100%	246



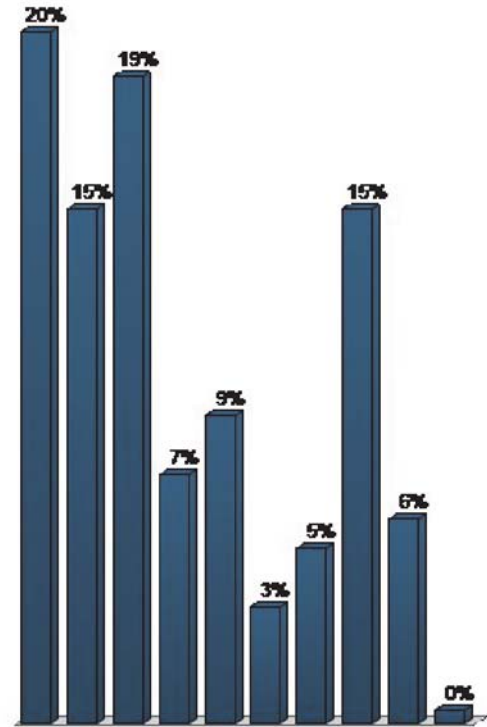
12. 12. The thing I would like to improve in my neighborhood is (choose top 5): (Multiple Choice - Multiple Response)

	Responses	
	Percent	Count
More variety in housing type and price	8.52%	19
More parks that I can walk to	7.17%	16
Access to grocery store or food choices	8.52%	19
More sidewalks, bike lanes and trails	17.49%	39
Community gardens	8.97%	20
More demographic diversity	12.11%	27
Easier access to frequent public transit	9.42%	21
Better maintained streets and sidewalks	13.9%	31
Better maintained houses and lots	13%	29
Other – please use note card	0.9%	2
Totals	100%	223



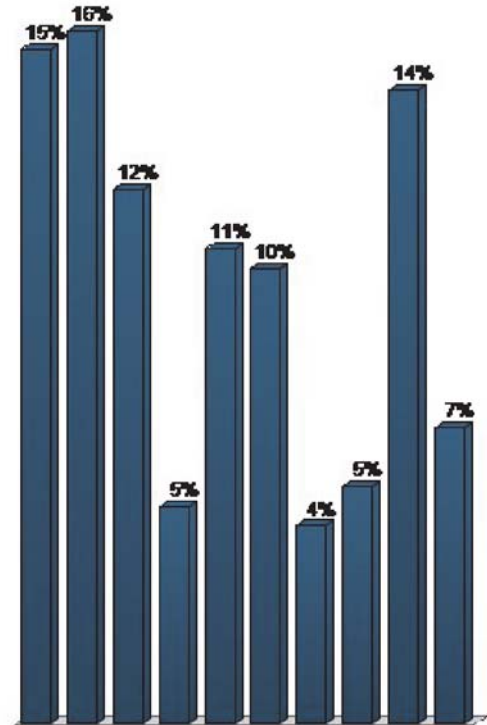
13. 13. Critical social and cultural issues that should be prioritized include (choose top 5): (Multiple Choice - Multiple Response)

	Responses	
	Percent	Count
Drug addiction	20.09%	47
Homelessness	14.96%	35
Employment opportunities	18.8%	44
Demographic diversity	7.26%	17
Aging population	8.97%	21
Loss of rural lifestyle / agriculture	3.42%	8
Care and upkeep of public housing	5.13%	12
Job skills and education	14.96%	35
Housing affordability	5.98%	14
Other – please use note card	0.43%	1
Totals	100%	234



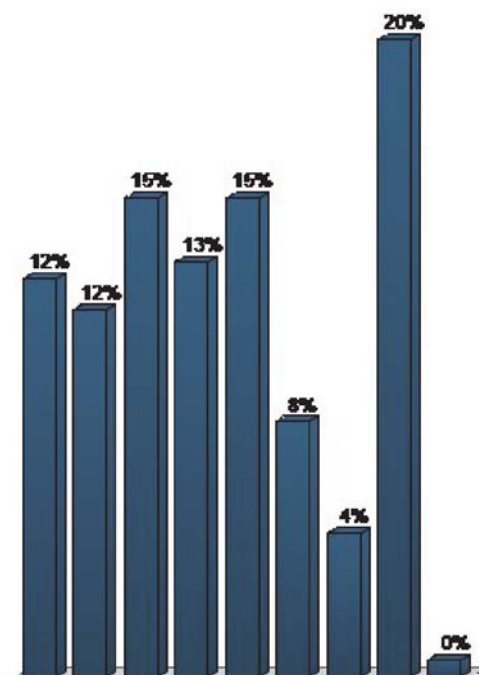
14. 14. As it relates to transportation planning, we need (choose top 5): (Multiple Choice - Multiple Response)

	Responses	
	Percent	Count
More sidewalks	15.25%	34
More bike lanes	15.7%	35
Construct greenways	12.11%	27
More street trees	4.93%	11
Better transit service in town	10.76%	24
Better regional transit	10.31%	23
Reduce traffic congestion	4.48%	10
Better road connectivity	5.38%	12
Promote “complete streets”	14.35%	32
Other – please use note card	6.73%	15
Totals	100%	223



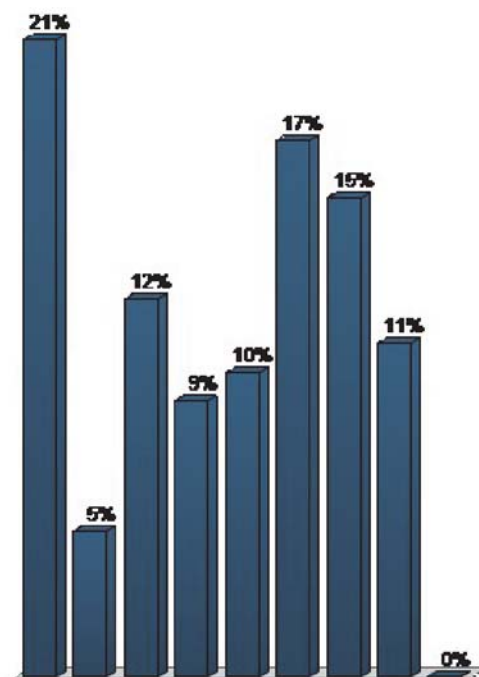
15. 15. As it relates to parks and open space, we need (choose top 5): (Multiple Choice - Multiple Response)

	Responses	
	Percent	Count
More small parks within neighborhoods	12.5%	25
A better gathering space downtown	11.5%	23
More greenways and trails	15%	30
Better maintain what we currently have	13%	26
Promote better environmental stewardship	15%	30
More ballfields and organized sports	8%	16
Our parks and open spaces are adequate as is	4.5%	9
An upgraded aquatic center	20%	40
Other – please use note card	0.5%	1
Totals	100%	200



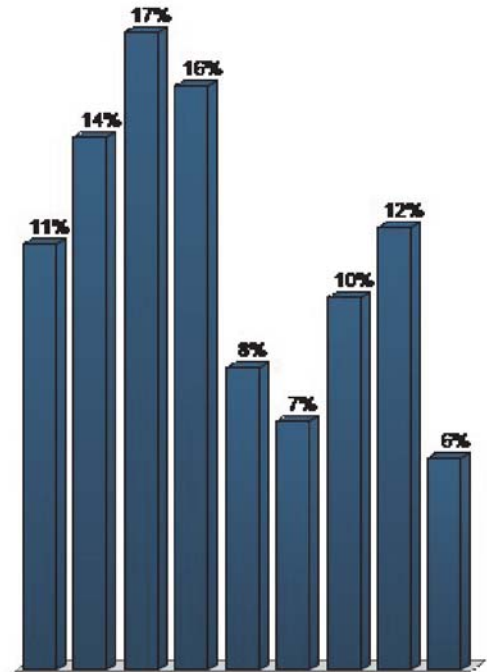
16. 16. As it relates to natural open space and the outdoors, the City should (choose top 5): (Multiple Choice - Multiple Response)

	Responses	
	Percent	Count
Protect rivers and streams	20.66%	44
Protect steep slopes	4.69%	10
Preserve vital open space corridors	12.21%	26
Protect forest and tree cover	8.92%	19
Reduce development footprint	9.86%	21
Promote environmental stewardship	17.37%	37
Better promote outdoor recreation assets	15.49%	33
Promote planting more trees	10.8%	23
Other – please use note card	0%	0
Totals	100%	213



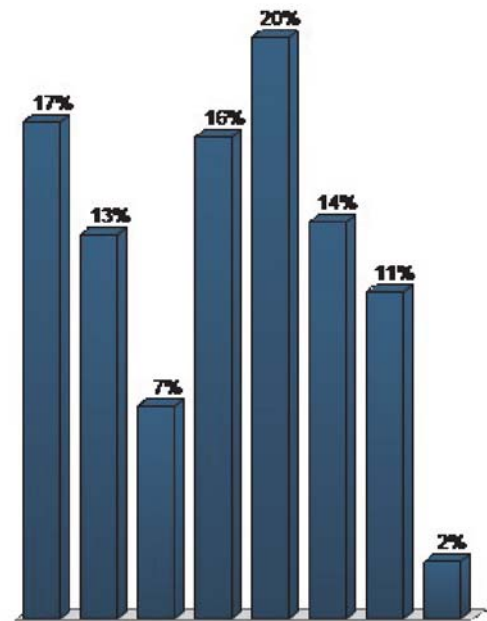
17. 17. As it relates to improving downtown, I would like to see (choose top 5): (Multiple Choice - Multiple Response)

Responses		
	Percent	Count
More shops, restaurants and entertainment	11.32%	24
More places to live	14.15%	30
More types of jobs	16.98%	36
Safer walking connections to downtown	15.57%	33
A central gathering and event space	8.02%	17
More festivals and events	6.6%	14
More hotels	9.91%	21
Better maintenance of public spaces	11.79%	25
Other – please use note card	5.66%	12
Totals	100%	212



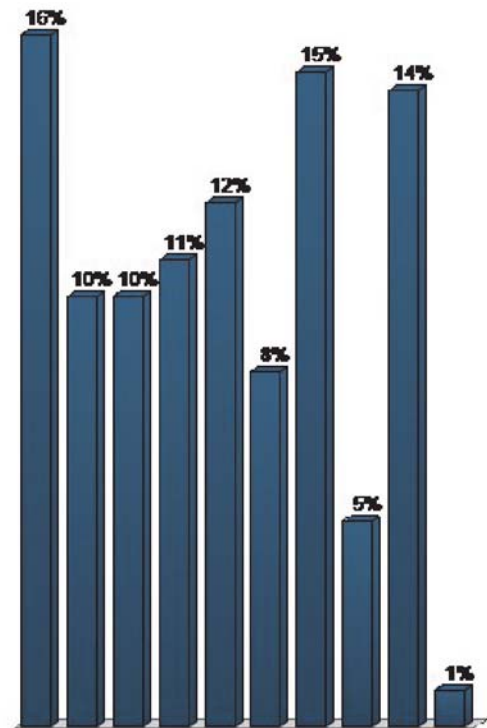
18. 18. As it relates to land use planning and policy, the City should (choose top 5): (Multiple Choice - Multiple Response)

	Responses	
	Percent	Count
Encourage a higher mix of uses around Downtown	16.91%	35
Focus on downtown redevelopment	13.04%	27
Protect the surrounding rural countryside	7.25%	15
Protect and preserve the natural environment	16.43%	34
Encourage more compact and walkable development	19.81%	41
Provide more transit options and linkages	13.53%	28
Improve the major corridors into town	11.11%	23
Other – please use note cards	1.93%	4
Totals	100%	207



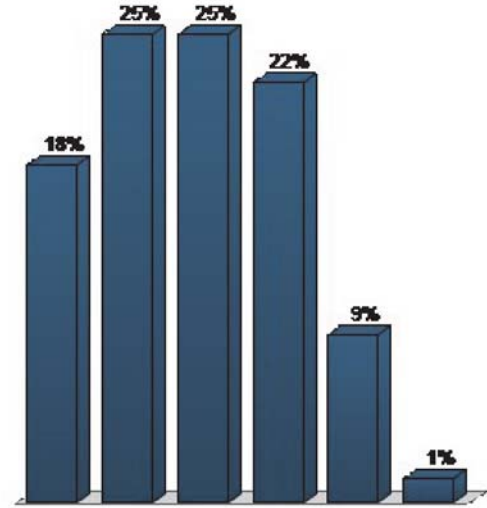
19. 19. As it relates economic development planning and policy, the City should (choose top 5): (Multiple Choice - Multiple Response)

	Responses	
	Percent	Count
Promote job training and education	15.61%	37
Explore regional cooperation / collaboration	9.7%	23
Expand entertainment industry	9.7%	23
Expand cultural tourism	10.55%	25
Expand outdoor recreation tourism	11.81%	28
Expand use of race track for large events	8.02%	19
Support entrepreneurship and incubators	14.77%	35
Invest in “pad ready” industrial sites	4.64%	11
Promotion of Bristol’s unique qualities nationally	14.35%	34
Other – please use note card	0.84%	2
Totals	100%	237



20. 20. As it relates to regional cooperation and partnerships, the City should (choose all that apply): (Multiple Choice - Multiple Response)

	Responses	
	Percent	Count
We should link our greenways regionally	17.83%	28
We should create regional transit connectivity	24.84%	39
We should coordinate economic development	24.84%	39
We should jointly promote the region	22.29%	35
We should just focus on Bristol	8.92%	14
Other – please use note card	1.27%	2
Totals	100%	157



21. 21. I plan on continuing to participate in the Comprehensive Plan process (choose 1): (Multiple Choice)

	Responses	
	Percent	Count
YES!	86.27%	44
I am not sure	1.96%	1
NO!	0%	0
As much as my family, job, dog, cat will allow!	11.76%	6
Totals	100%	51

